

Task Force on Northern Post-Secondary Education

NUNAVUT ENGAGEMENT THEMES

creating post-secondary opportunities
in the North, by the North, for the North

Social Support

“availability of childcare had an impact on my success in completing post-secondary education”



Students need community when they are far from their own communities

Elders in programs are a positive influence



The Housing Factor



Availability of housing dictates program choices

Many students have families - family housing is hard to find



Hard to study in crowded housing

“Living with somebody you have never met can be very scary for people in their first year”

Want to read the whole report? It's online at
<https://northernpse.ca/>

Task Force on Northern Post-Secondary Education

NUNAVUT ENGAGEMENT THEMES

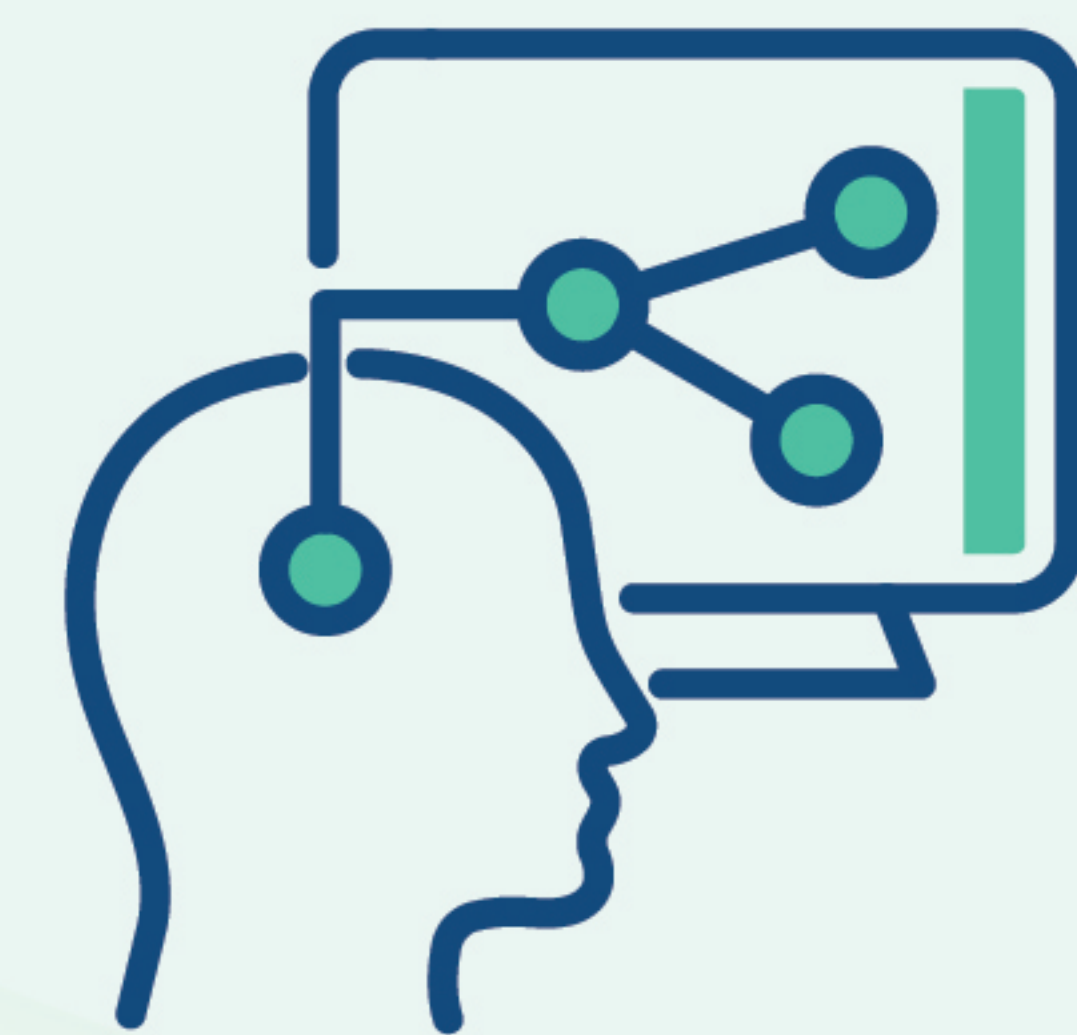
creating post-secondary opportunities
in the North, by the North, for the North

It starts with schools



Nunavut Sivuniksavut instils culture, pride and skills

Students don't know what career options are out there



Test for learning disabilities

"Social passing" stores up problems



Inuit education for Inuit

"Education has to change to the form of Inuit"



Nunavut Sivuniksavut instils culture, pride and skills

English is a second language for many Nunavummiut



Recognize and credit studies built on Inuit knowledge

Making education accessible

"trying to do an online program is harder than being in the actual school"



People's life knowledge should be accounted for when they apply

Bring courses closer to home - but ensure the course quality stays high



Want to read the whole report? It's online at
<https://northernpse.ca/>